



Make it your campus



For more information, please visit lancaster.ac.uk

LICA Building

Contents

Campus

- 04** Community
- 06** Together
- 08** Home
- 10** Choice
- 12** Leisure
- 14** Active
- 16** Calm
- 18** Space
- 20** Delicious
- 22** Equipped

Our green and spacious campus is around three miles south of the City of Lancaster. It is the complete setting for your life and your studies, with new and extended sports facilities, places to relax and socialise, and study spaces to suit your mood. Once here, you'll make this campus your own.



scan for video

"I love that everyone is much closer and you meet so many more people in comparison to a city uni."

Naomi Oti
Cartmel College





Moving in weekend

"From my first day here, the college has supported me in feeling at home, and supported me in getting the most out of my time here."

Amelia Doran
Furness College

For more information, please visit lancaster.ac.uk



Furness College



Fylde College

Community



Summer Extrav celebrations



scan for video

"If you are not from the UK, don't worry, you will always find a piece of home here on campus."

Fuk Ching Wong
Graduate College



The Lancaster Photographer

Summer Extrav celebrations

We're one of only a handful of UK universities with a collegiate system. Our colleges are individual, inclusive and diverse communities. The accommodation you choose determines which of our colleges you can pick from. Graduate College is exclusively dedicated to postgraduate students.

Your college will host events, social and sporting activities, arrange inter-college competitions and sports leagues, alongside regular college trips and excursions. They also deliver two of the biggest social events in the annual college calendar - the winter ball and the summer extravaganza.

Summer Extrav celebrations



The Lancaster Photographer



For more information, please visit lancaster.ac.uk

Cartmel College

Together

Each of our nine colleges has a different social space with its own personality and vibe. There are plenty of places to eat, drink, study, meet friends, attend events or just hangout. Don't worry, you can access all the college spaces across campus, but we're sure you'll end up having a favourite or two.

County College



Grizedale College

"My favourite places to meet friends are Barker House Farm and Grizedale Bar."

Maria Clark
Cartmel College



Furness College



Fylde College



scan for video

Pendle College



"I usually sit in Alex Square or on the benches outside Fylde bar. They are little sun traps where you can people watch and enjoy food, drink and the weather."

Catherine Brabin
County College





Home

Living on campus is a great way to meet other students, make friends and feel at home. Two thirds of our accommodation is en suite, but we also offer accommodation with shared toilet and shower facilities. Most of our accommodation is self-catered and has a kitchen and shared social space, but catered packages are available.

A dedicated accommodation manager for each college means that there's always a friendly face to approach at any point.

"I lived on campus during my first year, and it was a fantastic experience. It was also very safe at any time, day or night. The convenience of being close to the library, classes, and lectures made the overall living experience both practical and enjoyable."

Lameeya Bandukwala
Grizedale College



For more information, please visit lancaster.ac.uk





Adapted room

Choice

On campus you'll find accommodation options to suit different preferences and budgets.

Flat with en suite facilities

- Single bedrooms with en suite shower, washbasin and WC
- Kitchen and dining area shared by up to eight students

Flat with shared facilities

- Single bedrooms with washbasin
- WCs and showers shared by up to six students
- Kitchen and dining area shared by up to 12 students

House with shared facilities

- Single bedrooms
- WC and shower shared by two students
- Large kitchen and dining area shared by 12 students

Self-contained studio

- En suite shower, washbasin and WC
- Small kitchenette and dining area
- 3/4 size bed (120cm wide x 190cm in length)
- A handful of studios are larger and suitable for two occupants

Adapted

We have a variety of adapted rooms on campus and can normally accommodate special requirements. We can prioritise your application for accommodation if you provide us with information about a disability or impairment.



You choose





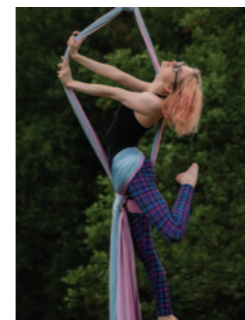
Leisure

University is a great opportunity to try something new or continue an existing hobby or passion. When we say there's something for everyone, we mean it... from Acapella to Whosoc, Barbell to Parkour, there's a society for you. Societies are a great way to let off steam, meet like-minded people and have fun. Volunteering and academic societies also give you a great opportunity to develop and gain experience.

For more information, please visit lancaster.ac.uk



scan for video



"I had zero dance experience but I found a home in the Hip Hop and Breakdance society. It was a safe space where I could unwind and explore different dance genres all while making friends and building my confidence."

Tai Rosemin
Bowland College



"I really enjoy going to Craft Society sessions. We have a new crafting activity to try each week, so it's a good opportunity to try things which you might not have done otherwise. I'm not always the best crafter, but that doesn't matter. It's connecting with other students and trying new things which is the most important part."

Phoebe McEwen
Pendle College





scan for video



8.5m climbing wall



100 station fitness suite

25m swimming pool



For more information, please visit lancaster.ac.uk

Active

Arriving on campus, you'll spot our impressive sports centre. We've invested over £25 million in our sports facilities, including multi-purpose sports halls, a climbing wall, swimming pool, fitness suite and strength and conditioning room. Outside there's the football, rugby and hockey pitches you'd expect, as well as basketball, netball and tennis courts.

"My perfect day on campus starts with a lie in, I'd wake up and head to the gym. Workout, go for a swim, before running home. I'd then probably relax for the rest of the day and order a Sultans to my door for tea - it's about balance!"

Ryan Yates
Grizedale College

Roses is a great sporting tradition between the students of Lancaster and the University of York. This annual friendly tournament hosts over 50 different sports and more than 100 fixtures in one weekend. Whether you're competing or cheering from the side lines, it's a highlight of the university calendar.



"As well as having a great time on the pitch, the best part of Roses weekend for me was celebrating with my team mates after the game and cheering the rest of the teams from the sidelines. It's always a nice supportive atmosphere."

Tom Scott
County College





Lake Carter

Calm

Our love of green space makes our campus stand out from others. Surrounded by 150 year old woodland that you can explore with paths and trails, we've designed our campus to have plenty of pockets of green space to enjoy whilst walking between lectures or taking some time out. We've even brought greenery inside our library with living walls and a tree affectionately named Norma.

"I love how beautiful the campus is at all different times of year. My flatmates and I love to walk around at night, as it's incredibly safe and quiet."

Maria Clark
Cartmel College

For more information, please visit lancaster.ac.uk



The Bonington Step

Living wall in the library



"The wildlife living around the accommodation is so special. It's nice to look out a window and see a rabbit, squirrel or a duck. They make great neighbours!"

Raven Alexandra Trigo
Bowland College



scan for video



"On a sunny day I like to walk the woodland trail, find a bench and sit down to read. Sometimes, I bring a blanket and some food and picnic on the grass."

**Fuk Ching Wong
Graduate College**



LICA

Alexandra Square



Ruskin Library



Great Hall Court



Grizedale College

Cycle route to the Health Innovation Campus



Margaret Fell Lecture Theatre

Space

Whether you love the sun or like to wrap up warm for a winter walk, our beautiful campus will set the scene for your student life. Our campus is stunning no matter the season.



Great Hall Square



Starbucks at Barker House Farm



Wibbly Wobbly Burger Bar



Marketplace café



scan for video



Weekly market during term time

"Everyone's first choice for lunch is Greggs, to avoid the queue I recommend Pizzetta or Subway for a sandwich."

Ryan Yates
Grizedale College

Delicious

Campus has lots of places to eat, whether you want a sit down meal, takeaway, a speciality coffee or just something to grab and go. There are familiar options like Greggs, Subway and Costa, but also traditional Chinese food and a curry house. Don't forget our term time weekly market with food stalls.



Pizzetta Republic

"There's loads of options but my friends like to go to Sultan's. Everyone likes it and there is a large variety to choose from - I love the milkshakes!"

Csenge Karl
Cartmel college

Sultan of Lancaster





Edward Roberts Court

"Campus has various grocery stores, restaurants, a pharmacy, gym, etc. that made the overall living experience very convenient and enjoyable."

Lyea Rivers
Pendle College

For more information, please visit lancaster.ac.uk



Hair and beauty salon

"Having everything in close proximity lets me get errands done without having to plan a trip to the city centre since my needs are met on campus. The post office is especially handy and there's parcel pick up spots across campus too."

Raven Alexandra Trigo
Bowland College

Costa and Spar



Equipped

As well as the things you want for a great time on campus, there's also everything you need to live comfortably. Launderettes, a post office, medical centre, pharmacy, hair salon, barbers and more means you don't have to travel far.



One of many launderettes on campus



Weekly market during term time

Central stores





Lancaster University, Lancaster, LA1 4YW
+44 (0)1524 65201
lancaster.ac.uk



2918149
Carbon Captured Material

